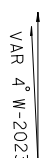
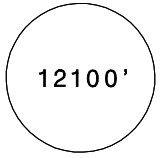
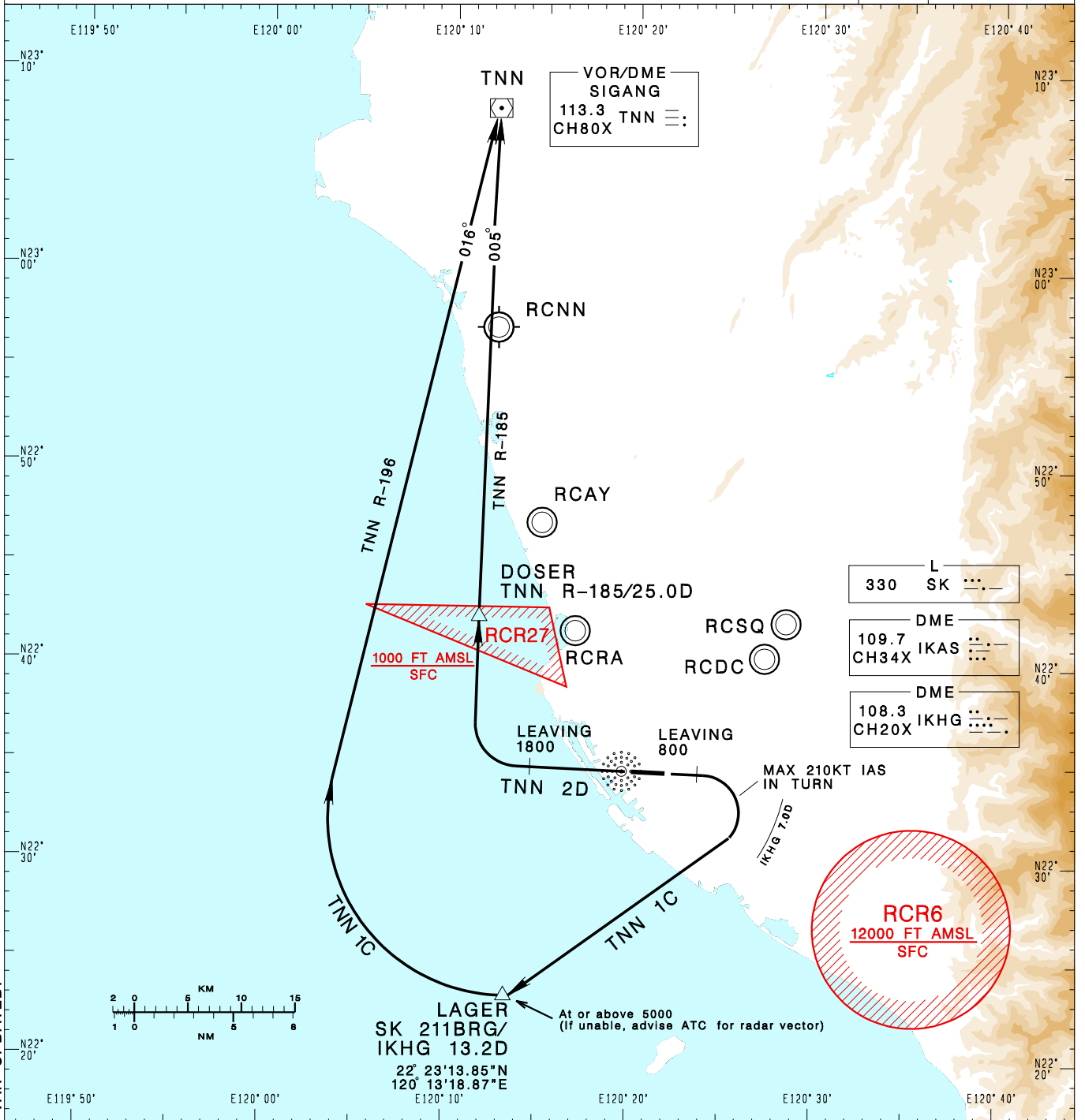


高雄國際機場
KAOHSIUNG INTL AD

RCKH SID
TNN 1C(RWY09)
TNN 2D(RWY27)

KAOHSIUNG APP 124.7 125.7	KAOHSIUNG TWR 118.7 120.7	ATIS 127.8	  MSA ARP 25NM	
Apt Elev: 32'		Trans Level: FL130		Trans Alt: 11,000'
BEARINGS ARE MAGNETIC; DISTANCES ARE NAUTICAL MILES; ELEVATIONS, HEIGHTS IN FEET				



CHANGES: MSA AND MAG VAR UPDATED.

SIGANG ONE CHARLIE DEPARTURE
Climb on RWY HDG until leaving 800ft, then turn right direct LAGER, complete the turn within 7.0D from IKHG, cross LAGER at or above 5000ft, then turn right to track TNN R-196 to TNN.

SIGANG TWO DELTA DEPARTURE
Climb on RWY HDG until leaving 1,800ft, then turn right to track TNN R-185 to DOSER then TNN.

NOTE

- Minimum climb gradient required:
TNN 1C: 6%(365ft/NM) until 2,000ft.
TNN 2D: 4%(245ft/NM) until 1,800ft.
- Caution: pier cranes, terrain and stacks east, west and south of the airport.
- ATS surveillance required.